

National Theological Association

Governance Structure Overview

1. General Assembly

***Composition*:** Representatives from member institutions and individuals

***Meetings*:** Biennial meetings to discuss key issues, elect leaders, and make strategic decisions

***Responsibilities*:**

- Electing leaders and members of the Executive Committee
- Approving major policies and decisions
- Reviewing and approving NTA's budget and financial reports

2. Executive Committee

***Composition*:** Elected officers, including President, Vice-President, and Secretary/Treasurer

***Responsibilities*:**

- Overseeing NTA's operations and implementing decisions
- Providing strategic guidance and direction
- Ensuring accountability and transparency

3. Board of Directors

***Composition*:** Experienced leaders from member institutions and industry experts

***Responsibilities*:**

- Providing strategic guidance and oversight
- Ensuring NTA's activities align with its vision, mission, and core values
- Approving major decisions and policies

4. Commissions and Committees

- ***Accreditation Commission*:**

- Responsible for accreditation and quality assurance

- Develops and implements accreditation standards and procedures
- ***Theological Commission*:**
 - Focuses on theological education and research
 - Promotes theological excellence and contextual relevance
- ***Other committees*:** May be formed as needed to address specific issues or projects

5. Secretariat

***Composition*:** Led by an Executive Director or Secretary General

***Responsibilities*:**

- Providing administrative support and coordination
- Managing day-to-day operations
- Implementing decisions and policies

Key Roles and Responsibilities

- ***President*:**

- Provides leadership and represents NTA externally
- Chairs the Executive Committee and General Assembly

- ***Vice-President*:**

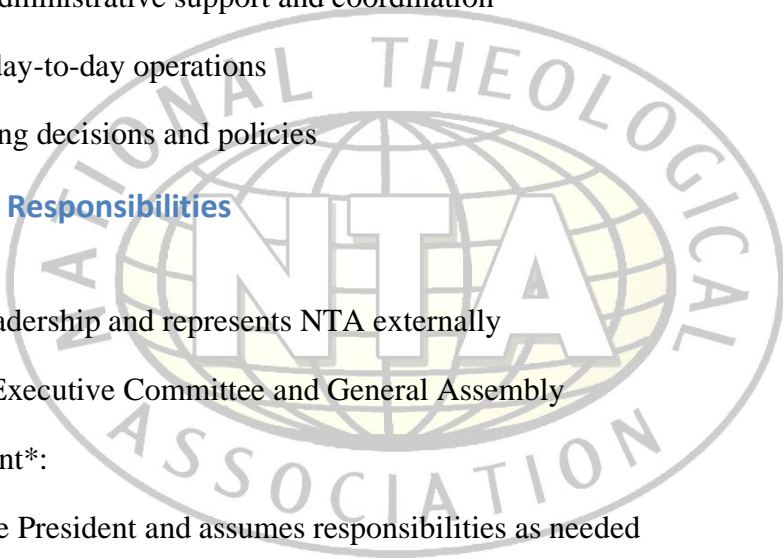
- Supports the President and assumes responsibilities as needed
- May chair specific committees or task forces

- ***Secretary/Treasurer*:**

- Oversees financial management and ensures accurate record-keeping
- Ensures transparency and accountability in financial matters

- ***Executive Director/Secretary General*:**

- Manages day-to-day operations and implements decisions
- Provides administrative support and coordination



Decision-Making Process

Consultative process: Involves the General Assembly, Executive Committee, and Board of Directors

Guiding principles: NTA's vision, mission, and core values

